



HOW DOES IT FEEL TO BE A CYBERCRIMINAL?

You probably have unread messages/notifications on your phone right now. Cybercriminals are relying on this information overload to slip targeted and sophisticated attacks right past you.

BUT YOU CAN LEARN TO OUTSMART THESE CYBERCRIMINALS—by playing the part of one of them. Temple University's Cybersecurity in Application, Research & Education (CARE) Lab is partnering with the Layer8 Conference to challenge undergraduate college students to gain first-hand cyberattack and cybersecurity experience by participating in a creative and unique [Social Engineering Capture the Flag \(SECTF\) competition](#).

COLLEGIATE SECTF EVENT

This isn't a frivolous video game challenge where you "hack" by moving puzzle pieces around or selecting random numbers. No, we want to find out if you and your team can demonstrate social engineering prowess—and you can win prizes for doing it! Winning teams will be promoted on the CARE Lab's website and social media, and receive cash prizes.

1st place: \$3,000

2nd place: \$2,000

3rd place: \$1,000

You'll use social engineering (psychological manipulation meant to get someone to disclose sensitive information or provide unauthorized access) techniques on *expert social engineering judges*:

Open-source intelligence (OSINT)
Legally and ethically gather information.

Phishing
Target the judges via email posing as a legitimate institution and attempt to extract sensitive data.

Vishing
Just like phishing but done over a voice over internet protocol (VOIP) call.

Report & Debriefing
Submit a formal report on your findings & debrief the judges.

REGISTRATION

Register your team by June 30 at 6 p.m. EST: <https://sites.temple.edu/socialengineering/team-registration/>

MEET THE JUDGES



Leon Johnson



Krittika Lalwaney



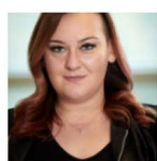
Hakeem Thomas



Whitney Maxwell



Alethe Denis



Snow



Tinker



Patrick Laverty

TEAM SUBMISSION REQUIREMENTS

1. Team and Institution name
2. Team member details: size (1-6 members), full names, email addresses, headshots and short bios (100 words per member)
3. Faculty advisor (with institution-affiliated email address). The advisor can be full-time faculty, full-time staff or full-time graduate student. Advisors who have part-time status (adjuncts, etc.) are not permitted. If you are a graduate student team, your advisor must be faculty or staff.
4. A 500-1000 word essay for why your team should be selected to compete!
5. A 1-2 minute SE Public Service Announcement entry video!

PARTICIPATION REQUIREMENTS

1. Each member of selected teams will be required to complete a code of conduct waiver that ensures students do not cheat or use external/professional assistance.
2. Vishing calls will be recorded, and those that are excellent will be shared on our website and/or at conference presentations! Each member of selected teams must complete an audio-visual release waiver to compete. This allows organizers to use images, audio, text, and video generated during the competition for event promotion and dissemination via conferences, publications, and podcasts.
3. Each member of selected teams will be required to complete a pre-event and post-event survey.

This event is considered research and is funded by NSF Award #2032292 and sponsored by Google.

